

# 200 PRINGLE

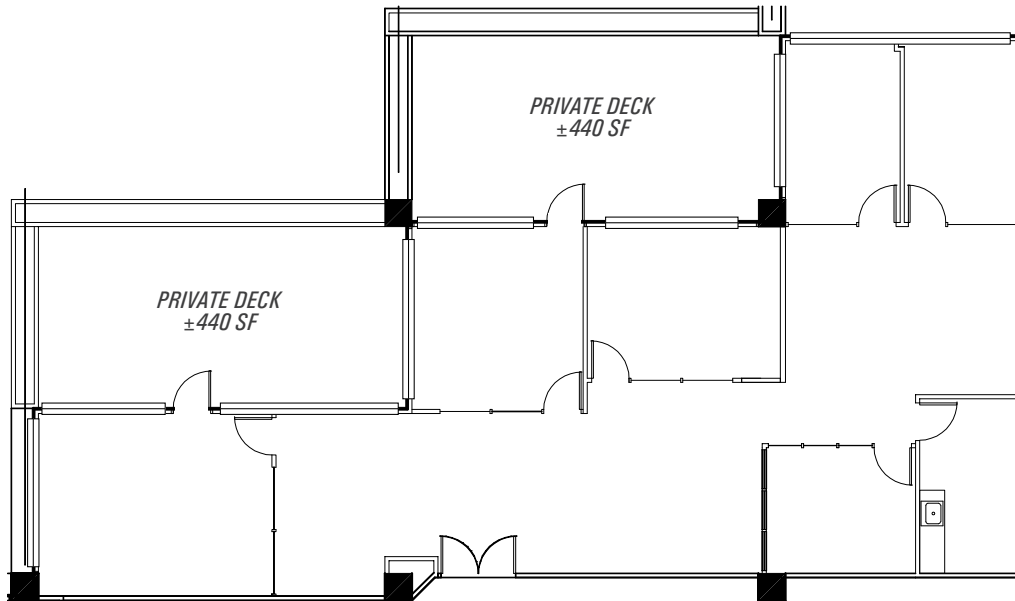
SUITE 450 | ±2,674 RSF | ±440 RSF private deck

*\*Deck not included in premises RSF*



WALNUT CREEK CENTER

100 / 200 PRINGLE



N. CALIFORNIA BLVD

## EXCLUSIVE AGENT

**BRECK LUTZ** Executive Managing Director 925.974.0109 | [BLUTZ@NGKF.COM](mailto:BLUTZ@NGKF.COM) | CA RE LICENSE #00936859

Procuring broker shall only be entitled to a commission, calculated in accordance with the rates approved by our principal only if such procuring broker executes a brokerage agreement acceptable to us and our principal and the conditions as set forth in the brokerage agreement are fully and unconditionally satisfied. Although all information furnished regarding property for sale, rental, or financing is from sources deemed reliable, such information has not been verified and no express representation is made nor is any to be implied as to the accuracy thereof and it is submitted subject to errors, omissions, change of price, rental or other conditions, prior sale, lease or financing, or withdrawal without notice and to any special conditions imposed by our principal.