

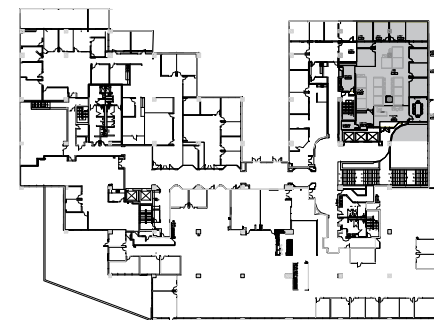
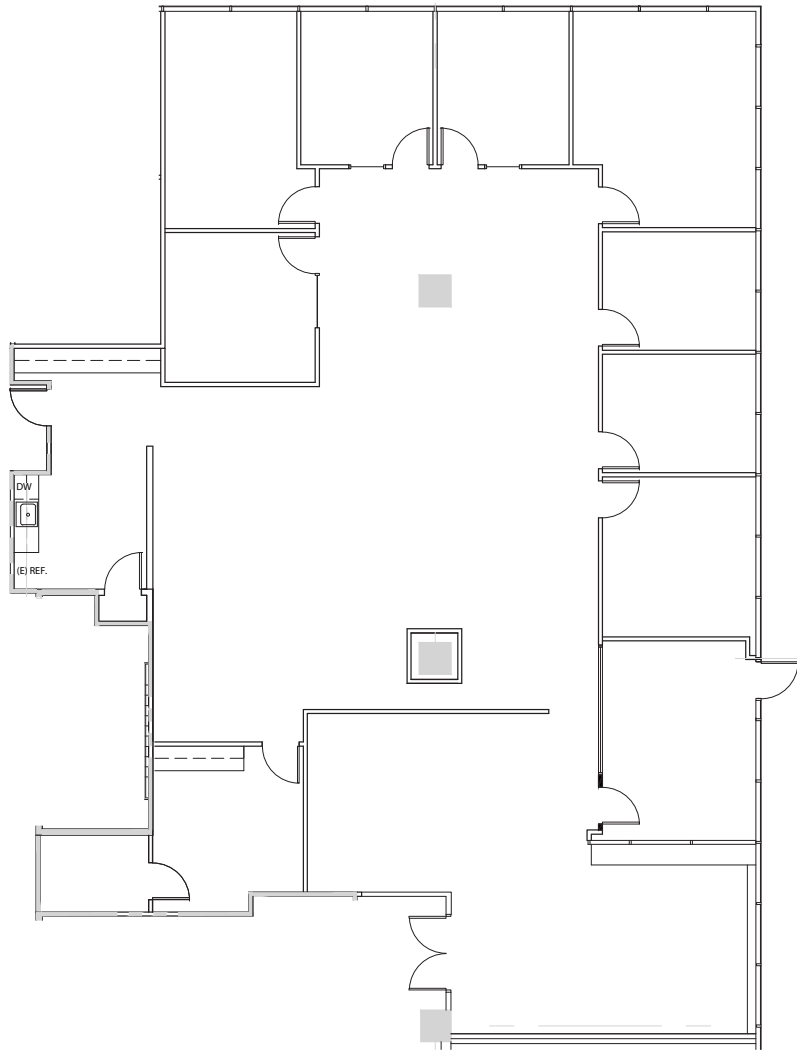
100 PRINGLE

SUITE 310 | ±5,745 RSF *includes landing*

WCC

WALNUT CREEK CENTER

100 / 200 PRINGLE



EXCLUSIVE AGENT

BRECK LUTZ *Vice Chairman* 925.974.0109 | BLUTZ@NGKF.COM | CA RE LICENSE #00936859

ALEX GRELL *Senior Managing Director* 925.974.0108 | AGRELL@NGKF.COM | CA RE LICENSE #01222891

The distributor of this communication is performing acts for which a real estate license is required. The information contained herein has been obtained from sources deemed reliable but has not been verified and no guarantee, warranty or representation, either express or implied, is made with respect to such information. Terms of sale or lease and availability are subject to change or withdrawal without notice.